

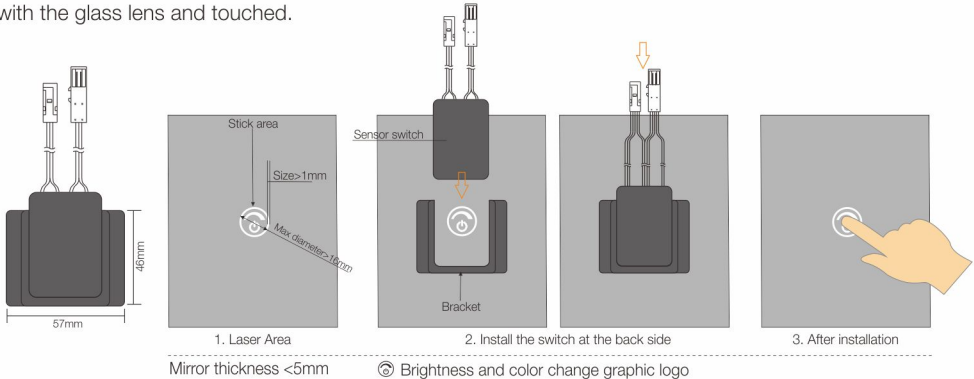
## S7B-A1 Mirror Touch Dimmer Switch (ON/OFF/Dimmer)



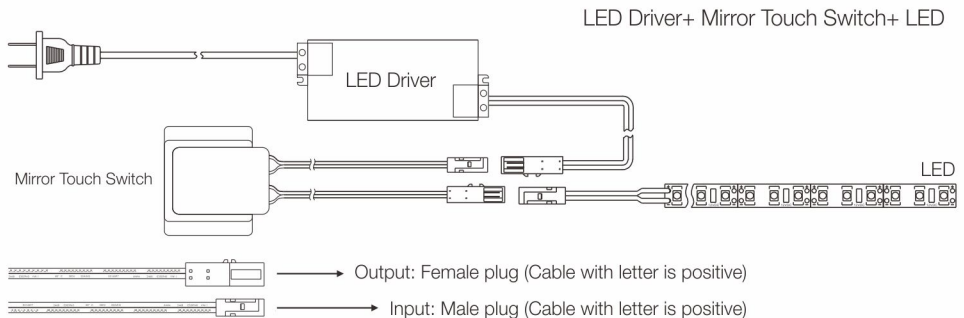
Voltage	DC12V / DC24V
Max watt	60W
Function	ON/OFF/Dimmer
Material	Plastic, Black
IP level	IP20
Size	50x33x10mm 57x46x4mm(Frame)

### Installation Way

Tear the 3M tape off the mirror product, stick the switch on the glass, the center of the switch is aligned with the glass lens and touched.



### Connection



### Notes

1. For indoor use only.
2. Do not disassemble the product.
3. Do not install the switch in water dropping place.
4. Use a dry cloth, never a strong cleaning agent.
5. Replace all set switch device if case of quality or malfunction.

